

#716. Pd 45-12  
 STATE OF UTAH, S.S.  
 County of Weber  
 Filed for record and recorded  
 February 29 A.D. 1924  
 at 10:41 o'clock A.M. and recorded  
 in book Page  
 Mae E. Brammell  
 County Recorder  
 Deputy Recorder

**OFFICIAL MAP OF 77  
 HUNTSVILLE TOWNSITE  
 WEBER COUNTY, UTAH.**

Resurveyed 1889, Washington Jenkins,  
 County Surveyor.

Copied From Original June, 1910, H.J. Craven,  
 Scale 1 in. = 300 ft. = 4.34 Ch. County Surveyor.

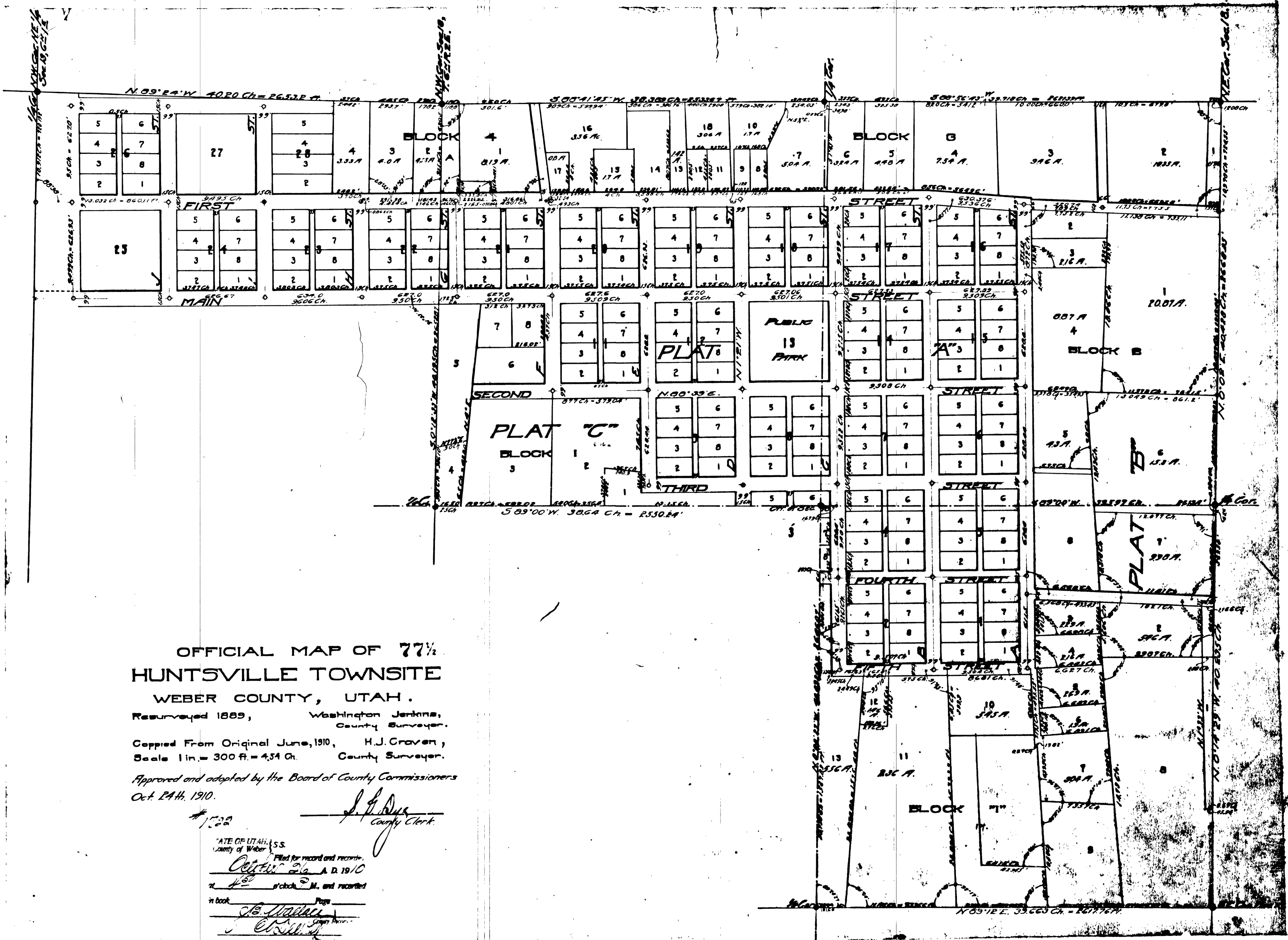
Approved and adopted by the Board of County Commissioners October 18, 1910.

Showing the Revised Incorporated City Limits of 1924 in Yellow.  
 Petition filed with Board of County Commissioners June 18, 1923.  
 Resolution adopted March 10, 1924, to become effective at 12 o'clock noon.  
 Boundary surveyed and marked on the ground with red sandstone monuments  
 between June 24 & July 11, 1924.

J. M. Child,  
 County Surveyor.

BE IT RESOLVED by the Board of Commissioners of Weber County, Utah, that the  
 foregoing plat and townsite of Huntsville, Utah, be approved and accepted as a true plat of  
 said townsite and setting forth the boundaries thereof.  
 Passed this 2nd day of November 1925.

J. M. Child,  
 County Surveyor.



OFFICIAL MAP OF 77 1/2  
 HUNTSVILLE TOWNSITE  
 WEBER COUNTY, UTAH.

Resurveyed 1889, Washington Jenkins,  
 County Surveyor.

Copied From Original June, 1910, H.J. Craven,  
 Scale 1 in. = 300 ft. = 4.54 Ch. County Surveyor.

Approved and adopted by the Board of County Commissioners  
 Oct. 24th, 1910.

*J. L. Dux*  
 County Clerk.

STATE OF UTAH, ss.  
 County of Weber, ss.  
 Filed for record and records  
 at \_\_\_\_\_ o'clock \_\_\_\_\_ M. and recorded  
 in book \_\_\_\_\_ Page \_\_\_\_\_  
*J. B. Wallace*  
 County Recorder.